

From art to

articulation

A little more

COSY

Crafted for
comfort

Brief yet

bold

Meant to
mesmerize

Brief yet

bold

Brief yet

bold

Meant to

mesmerize



HOME COLLECTION

HATIL[®]
FURNITURE

OUR STORY

HATIL is considered to be the gamechanger in Bangladesh's furniture industry. Carefully-chosen raw materials, environment-friendly business practices and customer-centric approach are all that made **HATIL** a celebrated furniture brand at home and abroad.

HATIL traces its roots to H.A. Timber Industries Ltd., a company established in 1966 by Late Al-Haj Habibur Rahman. Following his footsteps, **HATIL**, as a single furniture brand came into being under the leadership of Selim H. Rahman, a veteran and visionary leader in country's furniture industry.

Over the years, **HATIL** has become synonymous to elegant, contemporary and diverse furniture. Outstanding product quality and design backed by unique customer service are few of the traits that helped **HATIL** lead being in front. It is worth mentioning that to ensure the best possible quality, **HATIL** has been practicing Japanese Quality Management Philosophy "Kaizen" since 2007. In 2013, **HATIL** received HSBC-Daily Star Climate Award under Green Operation Category for its environment-sensible practices.

All these things contributed in a great way. **HATIL** is fast becoming a "Global Furniture Brand" with footprints in markets like the USA, Australia, Saudi Arabia, Kuwait, UAE, Qatar, Egypt, Thailand, Russia, Nepal, Bhutan and India.

TIMELINE



1939 - 2005
First Generation



Al-Haj Habibur Rahman
Founder, HA Timber Industries Ltd.

1989
Second Generation



Selim H. Rahman
Founder, **HATIL**



New Factory

1966

HA Timber Industries Ltd. started as a Solid Wood Processing Factory in Dhaka

1988

First-ever Italian Seasoning Plant established

1989

HATIL Complex Ltd. came into being as a manufacturer of Doors & Furniture

2000

First Mechanized production of doors started under a JV with the South Korean partner

2004

First organized production of Furniture started in Gazipur, Bangladesh

2009

Flagship **HATIL** showroom opened in Mirpur, Dhaka

2013

First International showroom opened in Sydney, Australia, First OEM export to Kuwait, KSA, and USA

2014

Second International showroom opened in Toronto, Canada

2015

- Construction works of New Factory started
- Collaboration made with NOLTE Group, Germany

2016

HATIL Training Institute established at **HATIL** Factory

2017

Indian showrooms opened in Chandigarh & Kolkata

2018

- Country's Largest Furniture Showroom (50,000 sft display area) at Kazipara, Mirpur, Dhaka
- Country's First-ever Virtual Furniture Showroom **HATIL V** launched

2019

- **HATIL** E-commerce Site and App came into being
- Factory production capacity nearly tripled



MESSAGE

Dear All

Welcome to the exciting world of **HATIL Complex Ltd.**

Since inception in 1989, **HATIL** has successfully led the nascent furniture industry in Bangladesh in setting design, quality, service, and functionality benchmarks. **HATIL's** dedication toward designing and making aesthetically beautiful and functionally superior furniture coupled with matching quality standard and top notch services have made us the most preferred brand in Bangladesh.

Over these years, we have invested significantly in streamlining the production by incorporating modern technology and achieving right combination of craftsman and machine. Our relentless effort has allowed us to install right kind of environmental and employee protection measures in our factories. **HATIL** proudly embraces its core organizational values in all spheres of business operation.

With all these skills and our accumulated experience, we now are able to cater to your most sophisticated demand for home, office, hospital, and industrial furniture.

You are always assured of our best services.

Selim H Rahman
Chairman & Managing Director
HATIL Complex Ltd.

FURNITURE CARE GUIDELINES

Lacquer Furniture

1. "Dusting" regularly with a clean, soft, lint-free cloth is sufficient. We recommend using a slightly dampened cloth for cleaning wood. Be sure to dry up the surface gently after cleaning to avoid water spotting
2. To move a piece of furniture, it should be lifted rather than dragged on the surface
3. Avoid exposing your furniture to strong sunlight. Unfiltered ultraviolet (UV) rays discolor and damage wood, its finish & fabric, leather and rugs over time
4. Controlling relative humidity and temperature is important to the long-life of fine wood furniture, leather and upholstery, though our furniture is already curated for natural fluctuations of temperature and humidity. For instance, solid tabletops expand slightly in the summer and contract in the winter leaving no negative impact
5. Nail polish remover, hair spray, perfume, potpourri and, glass cleaner (or any other products that contain solvents) damage wooden finishes. Do not place those products directly on a wooden surface
6. Rubber, cork, vinyl or plastic products can damage some finishes. Be careful while placing telephones, clocks and electronics with rubber and plastic footpad on a finished surface because it can react with the lacquer finish. Avoid placing vinyl or cork placemats, coasters directly on a wood surface. To prevent damage, you may use a protective layer (cotton, linen or felt cloth) between the object and the finish
7. Avoid exposing the furniture finish to items (e.g. laptop, desktop, oven etc.) that generates extreme heat, cold or moisture. Use protective padding under these items to avoid damaging the finish. Please follow manufacturer's instructions carefully when using any product on your furniture
8. Never place your furniture in wet and damp places. High moisture often attracts "white-ants" and nothing can prevent them from destroying the furniture. Remember our furniture is termite protected but not white-ants. Sufficient sunlight and airflow can save your furniture from white-ants. Besides, wet and damp environment attracts fungus to develop on your furniture

Upholstered Furniture (Sofa)

1. "Dusting regularly with a clean, soft, lint-free cloth is sufficient. The best form of fabric protection is prompt attention to spills. Blot any spills immediately with a clean folded towel or tissue -- never rub, but blot gently. Sometimes this is enough to rid of the stain completely. Do not use any water based solvent or soap for cleaning
2. You can extend your upholstered furniture's life by periodically turning over the loose cushions. This easy maintenance method allows for an even distribution of wear and tear and your cushions won't develop indentation right away. Caring for cushions by fluffing them after you've cleaned also helps keep them remain in shape. Change the cushions around from one part to the other in addition to turning them over. Some seats get more usage than others, so changing cushions around will ensure even usage
3. Vacuum your upholstered furniture weekly for general cleaning and to remove the surface dust. This also prevents dirt from becoming embedded on the surface. You can also use a brush to gently whisk the dirt away. Make sure you always use a soft bristled brush so that you don't damage the fabric
4. Avoid Sunlight and Pollutants. Too much sun can damage your upholstery fabric causing it to fade and even fray. Try to position it in a manner so that it is not exposed directly into the sunlight for long. This is especially true for silk or other delicate fabrics. Airborne pollutants such as fumes from cooking or smoke can also harm your fabric. It isn't always easy to avoid that to happen, but however, proper room ventilation helps in this case. Proper ventilation also helps control odor and you know upholstered fabric is likely to draw odor more than anything else
5. Professional Cleaning is highly recommended and doing that in a regular interval do the tricks to keep your upholstered furniture safe. Because the dirtier a sofa or chair becomes, the harder it is to be cleaned and restored to its original state

INDEX

Product	Page	Product	Page
Sofa	05	Rocking Chair	77
Divan	27	Easy Chair	78
Center Table	29	Accent Chair	79
Bed	33	Tea Trolley	80
Bed Drawer	38	Lobby Chair	82
Bedside Table	39	Coffee Table	84
Mattress & Toshok	41	Wooden File Rack	85
Dressing Table	42	Corner Table	87
Dressing Seater	45	Hanger Stand	88
Chest of Drawers	46	Cradle	89
Wardrobe	48	Shoe Rack	90
Chair	52	Reading Table	92
Dining Set	54	Iron Stand	95
Cafeteria Set	65	Serving Tray	96
Cafeteria Table	67	Telephone Seater	96
Dinner Wagon	68	Cubical Box Center Table	96
Showcase	69	Bar Counter	96
Open Shelf	70	Multipurpose Shelf	97
TV Cabinet	72	Household Steel Almirah	101
Mini Cabinet	76		

SOFA



Retreat-101



Madison-106



Surrey-107



Gleam-108



Houston-111



Cruiser-115



Ocean-117



Nebraska-119
[Left-Right Combinations]



Sargasso-131



Glacier-144



Empire-154



Porpoise-177



Angelina-179



Harbor-183



Andaman-184



Monaco-204

Glasgow-213



Liverpool-216



Nectarine-221



Salmon-224



Guppy-225



Rowan-229



Leeds-236



Tangelo-239



Nottingham-243
[Left-Right Combinations]



Salamander-244
[Left-Right Combinations, Sofa-cum-Bed]



Cocoa-247



Citron-250
[Left-Right Combinations]



Prune-251



Cardiff-253



Cloudberry-254



Juniper-258



Grape-259



Melon-260
[Space saving facilities]



Tangerine-261
[Left-Right Combinations]



Durham-263



Olive-264



Honeyberry-265



Durian-266



Chico-267



Atlanta-270 [Space saving facilities]



Detroit-271 [Sofa-cum-Bed]



Austin-277



Baltimore-278



Anderson-279



Wegener-280 [Modular Options]



Moseley-281



Wallace-283



Simsbury-285



Norfolk-286



Morris-287



Sherman-289 [Multiple Combinations]



Camden-288



Greenville-290



Amarillo-291



Husky-299



Fusion-302 [Sofa-cum-Bed]



Theremin-303 [Sofa-cum-Bed]



Organ-304



Niger-305 [Sofa-cum-Bed]



Hyperion-307



Orion-308



Lucan-309 [Modular Options & Storage Facilities]



Martin-310



Maria-312
[Left-Right Combinations]

DIVAN



Waikiki-101
L 1540 x W 640 x H 660mm



Paradise-103
L 1380 x W 580 x H 615mm



Flamenco-105
L 1755 x W 690 x H 620-660mm



Siesta-106
L 1470 x W 510 x H 685mm



Avon-107
L 1840 x W 740 x H 605mm

Clyde-108
L 1885 x W 810 x H 640mm



Louisiana-109
L 2135 x W 760 x H 615mm



Bermuda-110
L 2140 x W 900 x H 610mm

CENTER TABLE



Kiwi-101
Dia 740 x H 380mm



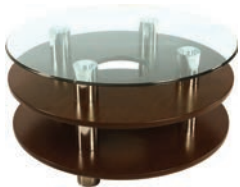
Thorpe-102
L 1060 x W 560 x H 475mm



Nile-104
L 800 x W 800 x H 420mm



Mississippi-109
L 700 x W 600 x H 405mm



Volga-110
Dia 750 x H 415mm



Danube-111
L 900 x W 600 x H 475mm



Kingfisher-113
L 850 x W 850 x H 445mm



Mackenzie-114
L 900 x W 600 x H 400mm



Pelican-125
L 750 x W 750 x H 480mm



Mallard-126
L 1035 x W 750 x H 505mm



Starling-127
Dia 740 x H 485mm



Kite-135
L 1060 x W 560 x H 460mm



Wren-141
L 1000 x W 460 x H 440mm



Dove-143
L 1060 x W 560 x H 480mm



Crossbill-147
L 1000 x W 460 x H 450mm



Harrier-149
L 900 x W 600 x H 410mm



Flicker-150
Dia 740 x H 430mm



Condor-151
L 790 x W 790 x H 420mm



Auklet-162
L 1205 x W 755 x H 450mm



Gannet-164
L 890 x W 890 x H 430mm



Falcon-165
L 700 x W 700 x H 540mm



Quetzal-166
L 815 x W 405 x H 390mm



Pigeon-167
L 1100 x W 745 x H 410mm



Spoonbill-168
L 900 x W 600 x H 370mm



Sandpiper-170
L 1095 X W 625 X H 370mm
L 540 X W 450 X H 275mm



Pristina -173
L 1300 x W 700 x H 415mm



Jacobin-174
L 1300 x W 705 x H 395mm



Snipe-175
L 1035 x W 750 x H 400mm



Morrow-176
L 900 x W 900 x H 425mm



Monarch-178
L 600 x W 600 x H 600mm



Thomas-179
L 1200 x W 600 x H 440mm



Johnson-180
L 550 x W 550 x H 565mm

BED



LACQUER

AVAILABLE DIMENSIONS (INSIDE)
King Plus / King / Queen / Semi Double
Length: 6.5 feet (Approx)/ 2000 mm (for all)
Width in feet: 6 / 5.5 / 5 / 4
Width in mm: 1830 / 1675 / 1525 / 1220



Dazzler-101
(Only in Queen Size)



Reverie-106
(Only in King Size)



Amity-104
(Queen & Semi-Double Sizes)



Fantasy-108
(Only in King Size. Manual & Hydraulic Storage available on demand)



Epiphany-115
(King, Queen & Semi-Double Sizes. Manual & Hydraulic Storage available on demand only with King & Queen Sizes)



Galaxy-118
(King, Queen & Semi-Double Sizes. Manual & Hydraulic Storage available on demand only with King & Queen Sizes)



Vega-128
(King, Queen & Semi-Double Sizes)



Illusion-144
L 2000 x W 965mm (Inside)



Obsession-151
(King, Queen & Semi-Double Sizes. Manual & Hydraulic Storage available on demand only with King & Queen Sizes)



Idyll-152
King, Queen & Semi-Double Sizes. Manual & Hydraulic Storage available on demand only with King & Queen Sizes)



Desire-154
(King & Queen Sizes. Manual & Hydraulic
Storage available on demand)



Thrill-162
King, Queen & Semi-Double Sizes. Manual &
Hydraulic Storage available on demand only
with King & Queen Sizes)



Utopia-170
(Only in Queen Size)



Cory-171
(King & Queen Sizes. Manual & Hydraulic
Storage available on demand)



Spell-173
(King & Queen Sizes. Manual & Hydraulic
Storage available on demand)



Mirage-175
(King, Queen & Semi-Double Sizes. Manual &
Hydraulic Storage available on demand only
with King & Queen Sizes)



Sweetheart-177
(Only in Queen Size)



Sublime-180
(King & Queen Sizes. Manual & Hydraulic
Storage available on demand)



Myth-184
(King, Queen & Semi-Double Sizes. Manual &
Hydraulic Storage available on demand only
with King & Queen Sizes)



Kent-187
(King Plus, King &
Queen Sizes)



Hanover-188
(King Plus & Queen Sizes)



Elegant-189
(King Plus, Queen & Semi-Double Sizes)



Tiara-190
(King Plus & Queen Sizes)



Harmonica-192
L 2160 x W 1060 x H 400mm (Outside)
L 2000 x W 900mm (Inside)



Aloe-196
(Only in Queen Size)

MFC MADE



Penchant-125
(King & Queen Sizes)



Macron-193
(King & Queen Sizes)



Stephen-194
(Only in Queen Size)



MILD STEEL



Borage-195
(Only in Queen Size)



Capsicum-127
L 1980 x W 1040 x H 400 / 1270mm (Outside) (Folded View)



Alto-191
(King Plus, Queen & Semi-Double Sizes)

BED DRAWER



Treasure-101
L 1990 x W 790 x H 240mm

BEDSIDE TABLE



LACQUER



Frolic-109
L 450 x W 400 x H 440mm



Cosmos-110
L 450 x W 400 x H 440mm



Essence-120
L 450 x W 400 x H 440mm



Runnel-121
L 450 x W 400 x H 440mm



Blossom-122
L 450 x W 400 x H 440mm



Daffodil-124
L 450 x W 400 x H 440mm



Orchid-126
L 450 x W 370 x H 250mm



Aroma-129
L 450 x W 400 x H 440mm



Bouquet-132
L 450 x W 400 x H 440mm

MFC MADE



Kakapo-133
L 500 x W 450 x H 500mm



Bergenia-202
L 450 x W 400 x H 445mm



MATTRESS

AVAILABLE DIMENSIONS
King Plus / King / Queen / Semi Double / Single
Length: 6.5 feet / 1980 mm (for all)
Width in feet: 6 / 5.5 / 5 / 4 / 3.5 (Approx)
Width in mm: 1815 / 1665 / 1510 / 1205 / 1055
Thickness: 8* / 6 / 4 / 3 inch; 200 / 150 / 100 / 75mm

*Only in "Spring". Rest are "Rebounded".

TOSHOK / COMFORTER

AVAILABLE DIMENSIONS
King Plus / King / Queen / Semi Double
Length: 6.5 feet / 1980 mm (for all)
Width in feet: 6 / 5.5 / 5 / 4 (Approx)
Width in mm: 1815 / 1665 / 1510 / 1205



Marvin-102
(King Plus / King / Queen / Semi Double / Single Sizes)



Jane-106
(King Plus / King / Queen / Semi Double)

DRESSING TABLE



LACQUER



Crosby-101
L 610 x W 500 x H 1800mm



Angelic-107
L 800 x W 410 x H 1800mm



Mystic-113
L 800 x W 430 x H 1835mm



Cutie-115
L 750 x W 450 x H 1800mm



Vogue-122
L 800 x W 420 x H 1800mm



Manila-131
L 850 x W 400 x H 1800mm



Craze-132
L 800 x W 420 x H 1800mm



Carnation-134
L 800 x W 420 x H 1800mm



Pansy-143
L 800 x W 420 x H 1800mm



Crush-144
L 800 x W 430 x H 1800mm



Chic-145
L 800 x W 420 x H 1800mm



Paris-148
L 800 x W 400 x H 1800mm



Proto-150
L800 x W 450 x H 1865mm



MFC MADE

DRESSING TABLE SEATER



Crown-152
L 1000 x W 400 x H 1745mm



Cinderella-153
L 800 x W 420 x H 1800mm



Pine-112
L 800 x W 400 x H 1820mm



Sardine-154
L 1200 x W 415 x H 775mm



Grace-101
L 425 x W 215 x H 420mm



Charm-102
L 410 x W 335 x H 415mm

CHEST OF DRAWERS



Wilder-109
L 1305 x W 590 x H 1230mm



LACQUER



Rowling-101
L 1305 X W 590 X H 1230mm



Maurice-102
L 800 x W 590 x H 1230mm



Alger-105
L 900 x W 470 x H 730mm



Archie-110
L 800 x W 590 x H 1230mm



Hodgson-112
L 1305 x W 590 x H 1230mm



Ashby-116
L 1305 x W 590 x H 1230mm



Madeleine-117
L 605 x W 400 x H 1000mm



Ashford-118
L 800 x W 400 x H 700mm

MFC MADE



Twain-106
L 1300 x W 588 x H 1225mm



Barnes-107
L 800 x W 588 x H 1225mm



Lona-110
L 1600 x W 465 x H 760mm



Ross-111
L 550 x W 400 x H 1210mm

WARDROBE



AVAILABLE DIMENSIONS

Width: 600 mm / 2 feet (Approx) for all

2 Door, 6 feet:	985 X 1865 mm / 3.25 X 6 feet (Approx)
2 Door, 7 feet:	985 X 2155 mm / 3.25 X 7 feet (Approx)
3 Door, 6 feet:	1470 X 1865 mm / 4.75 X 6 feet (Approx)
3 Door, 7 feet:	1470 X 2155 mm / 4.75 X 7 feet (Approx)
4 Door, 7 feet:	1952 X 2155 mm / 6.5 X 7 feet (Approx)

Wells-101
L1055 x W 600 x H 1830mm

LACQUER



Oscar-106
(Only in 2 Door, 6 feet)



Carolina-113
(2 Door, 6 & 7 feet, 3 Door
6 & 7 feet & 4 Door, 7 feet)



Budapest-126
(2 Door, 6 feet &
3 Door, 6 feet)



Bradford-134
(2 Door, 6 & 7 feet, 3 Door
6 & 7 feet & 4 Door, 7 feet)



Kingston-136
(2 Door, 6 & 7 feet, 3 Door
6 & 7 feet & 4 Door, 7 feet)



Bradshaw-141
(3 Door, 6 feet &
3 Door, 7 feet)



Coral-148
(2 Door, 6 & 7 feet, 3 Door
6 & 7 feet & 4 Door, 7 feet)



Bronson-152
(2 Door, 6 & 7 feet, 3 Door
6 & 7 feet & 4 Door, 7 feet)



Bruce-154
(2 Door, 6 & 7 feet, 3 Door
6 & 7 feet & 4 Door, 7 feet)



Burt-158
(2 Door, 6 & 7 feet, 3 Door
6 & 7 feet & 4 Door, 7 feet)



Carlson-164
(2 Door, 7 feet, 3 Door
7 feet & 4 Door, 7 feet)



Carrington-166
(2 Door, 6 & 7 feet, 3 Door
6 & 7 feet & 4 Door, 7 feet)

MFC MADE



Kimono-170
(2 Door, 6 & 7 feet)



Chapman-171
(3 Door, 6 & 7 feet)



Clifford-101
L 1800 x W 590 x H 1966mm



Colbert-102
L 1470 x W 590 x H 1966mm



Giorgio-103
L 985 x W 590 x H 1966mm



Rhone-173
Rhone-175
Rhone-176
L 1626 x W 590 x H 1982mm



Rhone-173
Rhone-175
L1084 x W 590 x H 1982mm



Rhone-173
Rhone-176
L1084 x W 590 x H 1982mm



Rhone-173
L 542 x W 590 x H 1982mm



Rhone-175
L 542 x W 590 x H 1982mm



Rhone-175
Rhone-177
Accent-178
L 2120 x W 590 x H 1982mm



Rhone-176
L 542 x W 590 x H 1982mm



Rhone-177
Accent-178
L1577 x W 590 x H 1982mm



Rhone-177
L 1035 x W 590 x H 1982mm



Accent-178
L 542 x W 590 x H 1982mm



Dill-180
(2, 3 & 4 Door, 7 feet)

CHAIR



Dunham-107



Canyon-112



Norfolk-115



Sitar-123



Okarina-124



Henley-149



Sagan-171



Saffron-176



Murray-177



Rafael-184



Hayden-188



Harvey-189



Harp-201

DINING SET



LACQUER



Seasame-101
Yogurt-101
L 800 X W 380 X H 1380mm



Seasame-101
Gelato-102
Dia 1200 x H 750mm



Seasame-101



Fairbanks-109
Carp-109
L 1600 x W 900 x H 750mm, for 6 Chairs
L 1325 x W 900 x H 750mm, for 4 Chairs



Fairbanks-109



Denali-111
Marshmallow-192
L 1610 X W 1020 X H 750mm



Denali-111



Fairmont-117
Danville-104
Dia 1200 x H 750mm



Fairmont-117
Tansy-105
L 2115 x W 1200 x H 750mm, for 8 Chairs
L 1600 x W 900 x H 750mm, for 6 Chairs



Fairmont-117



Falkner-118
 Barberry-118
 L 2115 x W 1200 x H 750mm, for 8 Chairs
 L 1600 x W 900 x H 750mm, for 6 Chairs
 L 1325 x W 900 x H 750mm, for 4 Chairs

Falkner-118



Gordon-128
 Lime-128
 L 1600 x W 900 x H 750mm, for 6 Chairs
 L 1325 x W 900 x H 750mm, for 4 Chairs

Gordon-128



Voltaire-128
 Waterloo-107
 L 1400 x W 900 x H 760mm

Voltaire-128



Waffles-138
 Macaroni-138
 L 1600 x W 900 x H 750mm, for 6 Chairs
 L 1325 x W 900 x H 750mm, for 4 Chairs



Waffles-138
Macaroni-138
Casserole-200
L 1600 x W 900 x H 750mm
L 1150 x W 450 x H 450mm



Waffles-138
Cobia-150
L 2100 x W 1100 x H 760mm, for 8 Chairs
L 1600 x W 1100 x H 760mm, for 6 Chairs



Waffles-138



Gourmet-148
Pancake-148
L 1600 x W 900 x H 750mm, for 6 Chairs
L 1325 x W 900 x H 750mm, for 4 Chairs



Gourmet-148



Savory-151
Oysters-151
Dia 1200 x H 750mm



Savory-151



Irving-155
Sofia-155
L 1600 x W 900 x H 750mm, for 6 Chairs



Irving-155
Sofia-155
L 1325 x W 900 x H 750mm, for 4 Chairs



Irving-155



Platter-156
Lime-128
L 1600 x W 900 x H 750mm, for 6 Chairs
L 1325 x W 900 x H 750mm, for 4 Chairs



Platter-156



Rockfish-157
Pancake-148
L 1600 x W 900 x H 750mm, for 6 Chairs
L 1325 x W 900 x H 750mm, for 4 Chairs

Rockfish-157



Halley-143
Lisbon-143
L 1600 x W 900 x H 750mm

Halley-143



Caraway-173
Greenwich-173
L 1610 x W 1020 x H 750mm

Caraway-173



Joel-177
Sushi-177
L 2215 x W 1015 x H 750mm

Joel-177



Cumin-179
Marmot-179
L 1800 x W 1100 x H 760mm

Cumin-179



Mack-181
Kingstown-194
L 1400 X W 800 X H 760mm

Mack-181



Calvin-182
Capelin-182
L 1600 x W 900 x H 750mm, for 6 Chairs
L 1325 x W 900 x H 750mm, for 4 Chairs

Calvin-182



Packer-183
Hummus-183
L 1610 x W 1020 x H 750mm



Packer-183
Hummus-183
Bagel-199
L 1610 x W 1020 x H 750mm



Packer-183
Orlando-198
L 1600 X W 900 X H 750mm



Packer-183



Radcliff-186
Marmot-179
L 1675 x W 1000 x H 750mm



Radcliff-186



Valentino-187
Sofia-155
L 1600 X W 900 X H 750mm



Valentino-187



Harper-191
Truffle-191
L 1600 X W 1000 X H 760mm
(Wooden Top)



Harper-191
Clover-105
L 1800 x W 900 x H 760mm



Harper-191



Comet-192
Marshmallow-192
L 1600 X W 1000 X H 750mm



Comet-192
Almond-106
L 1600 x W 900 x H 750mm, for 6 Chairs



Comet-192
Hibiscus-199 (Solid Top)
L 2220 x W 1020 x H 750mm



Comet-192
Hibiscus-199 (Solid Top)
L 1620 x W 1020 x H 750mm



Comet-192
Hibiscus-199 (With Glass)
L 1620 x W 1020 x H 750mm



Comet-192
Hibiscus-199 (With Granite)
L 1620 x W 1020 x H 750mm

Comet-192



Hansford-193
Jellyroll-193
L 1600 X W 1000 X H 760mm

Hansford-193



Edmund-194
Truffle-191
L 1600 X W 1000 X H 760mm
(Glass Top)

Edmund-194



Eaton-196
Marshmallow-192
L 1610 X W 1020 X H 750mm

Eaton-196



Acadia-197
Broadway-197
L 1610 X W 1020 X H 750mm

Acadia-197



Salvador-101
Baklava-101
L 1800 x W 1000 x H 750mm

Salvador-101



CAFETERIA SET



Buchanon-103
 Sparse-101
 L 600 x W 600 x H 750mm, for 2 Chairs

Buchanon-103



Artemis-113
 Mandolin-103
 L 900 x W 900 x H 750mm, for 4 Chairs



Artemis-113
Lute-104
L 660 x W 610 x H 750mm, for 2 Chairs



Artemis-113



Fairmont-117
Mandolin-103
L 900 x W 900 x H 750mm, for 4 Chairs

Fairmont-117



Riverton-114
Melodic-102
L 600 x W 450 x H 750mm, for 2 Chairs



Riverton-114
Morn-108
L 700 x W 700 x H 750mm, for 3 Chairs

Riverton-114

CAFETERIA TABLE



Sparse-101
L 600 x W 600 x H 750mm



Melodic-102
L 600 x W 450 x H 750mm



Mandolin-103
L 900 x W 900 x H 750mm



Lute-104
L 660 x W 610 x H 750mm



DINNER WAGON



Meatloaf-102
L 2000 x W 440 x H 1860mm



Broccoli-105
L 1800 x W 530 x H 1900mm



Fajita-108
L 1835 x W 515 x H 1835mm



Cave-116
L 1500 x W 480 x H 1835mm

SHOWCASE



LACQUER



Heritage-101
L 615 x W 520 x H 1830mm



Legacy-102
L 1000 x W 440 x H 1860mm



Stash-103
L 1070 x W 460 x H 1835mm



Fairfax-119
L 900 x W 420 x H 1820mm

MFC MADE



Paxton-101
L 1000 x W 400 x H 1855mm



Laramie-102
L 800 x W 400 x H 1855mm



Cinnamon-103
L 600 x W 600 x H 1855mm

OPEN SHELF





Hamlet-102
L 765 x W 385 x H 900mm



Iliad-107
L 1300 x W 410 x H 860mm



Gulliver-110
L 1210 x W 380 x H 1785mm



Claudio-126
L 505 x W 505 x H 2010mm



Rossini-128
L 1290 x W 350 x H 1845mm



Robinson-132
L 1170 x W 390 x H 1955mm



Sybil-133
L 670 x W 380 x H 1800mm



Schumann-134
L 400 x W 400 x H 1870mm



Verse-135
L 1600 x W 400 x H 1200mm

TV CABINET



Ginger-101

Lower Unit : L 1600 x W 400 x H 400mm

Hanging Unit : L 400 x W 400 x H 900mm

1 Lower Unit + 1 Hanging Unit : L1610 x W 400 x H 2125mm





Dory-102
L 770 x W 460 x H 900mm



Chopin-110
L 1525 x W 370 x H 600mm



Mozart-111
L 1000 W 460 H 565mm



Emily-113
L 1200 x W 400 H 620mm



Skipper-118
L 1785 x W 450 x H 1000mm



Barnum-120
L 2350 x W 450 x H 450mm



Winnie-123
L 1200 x W 600 x H 510mm



Gustav-122
L 1500 x W 400 x H 480mm



Schubert-124
L 2000 x W 450 x H 355mm



Davis-125
L 2000 x W 400 x H 305mm



Wilson-126
L 2000 x W 400 x H 455mm

MINI CABINET



Elgar-102
L 1400 x W 450 x H 860mm



Linen-104
L 1500 x W 500 x H 850mm



Lace-106
L 1500 x W 400 x H 840mm

ROCKING CHAIR



Twinkle-101
L 495 x W 920 x H 830mm



Bell-102
L 585 x W 900 x H 1000mm



Diddle -105 L 635 x W 770 x H 1020mm
John-105 L 460 x W 390 x H 390mm



Hickory-108
L 670 x W 955 x H 910mm

EASY CHAIR



Sunshine-104
L 660 x W 840 x H 930mm



Bitsy-106
L 700 x W 960 x H 810mm



ACCENT CHAIR



Pedro-109
L 715 x W 780 x H 1000mm



Prospero-110 (L 820 x W 950 x H 1030mm)
Kingsport-106 (L 600 x W 410 x H 400mm)

TEA TROLLEY



Assam-101
L 740 x W 510 x H 880mm



Fujii-102
L 525 x W 525 x H 800mm



Yunnan-104
L 880 x W 460 x H 850mm



York-106
L 700 x W 470 x H 800mm



Formosa-107
L 700 x W 470 x H 800mm

LOBBY CHAIR



Monopoly-103
Hallway-103



Rutherford-105
Curio-104



Uno-108
Portico-108



Scrabble-109
Portico-108



Franklin-111
Curio-104



Solitaire-114
Portico-108

COFFEE TABLE



Monroe-101 (L 350 x W 350 x H 420mm)
Violin-101 (L 750 x W 750 x H 505mm)



Cappuccino-105 (L 390 x W 355 x H 350mm)
Espresso-105 (L 1400 x W 800 x H 400mm)

WOODEN FILE RACK





Ophelia-103
L 895 x W 240 x H 1330mm



Helm-106
Henley-149
L 1335 x W 530 x H 2065mm

CORNER TABLE



Sundry-101
Dia 460 x H 550 mm
Dia 525 x H 510mm



Curio-104
Dia 450 x H 625mm



Roosevelt-105
Dia 450 x H 595mm



Truman-106
Dia 450 x H 640mm



Myriad-107
L 450 x W 450 x H 530mm



Rudolph-108
L 475 x W 390 x H 580mm

HANGER STAND





Rayon-101
L 600 x W 520 x H 1400mm



Crepe-102
L 500 x W 500 x H 1830mm

CRADLE



Flabby-103
Dia 350 x H 1820mm



Belgrade-101
L 1280 x W 920 x H 1785mm

SHOE RACK



Ballet-102
L 800 x W 300 x H 1160mm



Chelsea-103
L 1035 x W 400 x H 1275mm



Edina-106
L 800 x W 300 x H 1515mm



Edina-106 (With Mirror)
L 800 x W 300 x H 1515mm



Helsinki-101
L 850 x W 400 x H 900mm

READING TABLE



LACQUER



Potter-101
Henley-149
L 1140 x W 670 x H 750mm



Dennis-101
L 570 x W 490 x H 950mm
Olivia-101
L 510 x W 250 x H 600mm



Garfield-103
L 1100 x W 500 x H 1350mm
Lacquer / MFC

MFC MADE



Canberra-101
L 900 x W 600 x H 1380mm



Beetle-102
L 900 x W 600 x H 750mm



Zits-105
L 1000 x W 500 x H 1350mm



Leonard-201
L 1500 x W 700 x H 2010mm



Pogo-202
L 1000 x W 600 x H 1600mm



Doonesbury-203
L 1200 x W 600 x H 1850mm



Cactus-205
L 1000 x W 600 x H 1400mm



Prose-207
L 1000 x W 616 x H 1045mm



Opus-303
L 560 x W 1000 x H 740mm

IRON STAND



Lear-101
L 1400 x W 460 x H 810mm

SERVING TRAY



Jalapeno-101
L 508 x W 308 x H 76mm

TELEPHONE SEATER



Digit-103
L 775 x W 740 x H 690-830mm

CUBICAL BOX CENTER TABLE



Pythagoras-101
[With Storage Facilities]
L 1200 x W 900 x H 375mm

BAR CABINET



Helios-102
L 1055 x W 540 x H 960mm



MULTIPURPOSE SHELF





Everest-101
L 1200 x W 400 x H 1838mm
(With Glass)



Everest-101
L 800 x W 400 x H 1838mm
(MFC with Glass)



Everest-101
L 800 x W 400 x H 1838mm
(Lacquer without Glass)



Everest-101
L 600 x W 300 x H 1838mm
(With Glass)



Logan-106
L 900 x W 450 x H 1860mm
(With Glass)



Alps-108
L 800 x W 378 x H 1838mm
(MFC with Glass)



Alps-108
L 800 x W 378 x H 1838mm
(Lacquer with Glass)



Rubicon-109
L 800 x W 400 x H 1838mm
(With Glass)



Alabama-110
L 800 x W 400 x H 1838mm



Ashland-111
L 512 x W 400 x H 1855mm



Weston-112
L 750 x W 400 x H 1855mm



Susan-113
L 1200 x W 400 x H 2000mm



Eros-114
L 400 x W 400 x H 1700mm

HOUSEHOLD STEEL ALMIRAH



Carnelian-101
L 900 x W 500 x H 1850 mm



Moonstone-102
L 900 x W 500 x H 1850 mm

For Franchise Enquiry
+91 9815808085, 9501146220

HATIL Furniture Showrooms in the region

Curugram, Haryana
+91-9873280893, 9810444332

Srinagar, J & K
+91-9906289298, 01942316231

Jammu, J & K
+91-9329800003, 9419181777

Yamunanagar, Haryana
+91-9996030053, 9034156719

Mohali, Punjab
+91-9914900436, 9878026586

Zirakpur, Punjab
+91-7347433884, 9888215896

Pune, Maharashtra
+91-9529029348, 9855036401

www.hatil.com, www.hatil.in

India . Nepal . Bhutan . UAE . KSA . Kuwait . Qatar . Egypt . Australia . USA . Bangladesh